

13TH ADDITION

NOTE: A PARCEL OF LAND LYING IN, SE 1/4 SE 1/4 (32.321AC) OF SECTION 20, T-19-N, R-5-W OF THE FIFTH PRINCIPAL MERIDIAN, SHARP COUNTY, ARKANSAS, CONTAINING IN ALL 32.32 ACRES MORE OR LESS.

NOTE: EASEMENTS ARE 5 FT. ON STREET LINES NONE ON BACK LOT LINES EASEMENTS ARE LIMITED BY MARKED LINES

PROPERTY DEVELOPMENT CO., INC
CHEROKEE VILLAGE DEVELOPMENT CO., INC

REGISTERED PROFESSIONAL ENGINEER
JAMES F. GORE
No. 1222
3/29/61

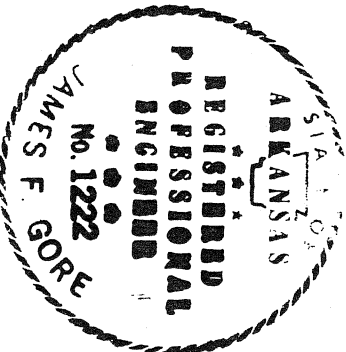
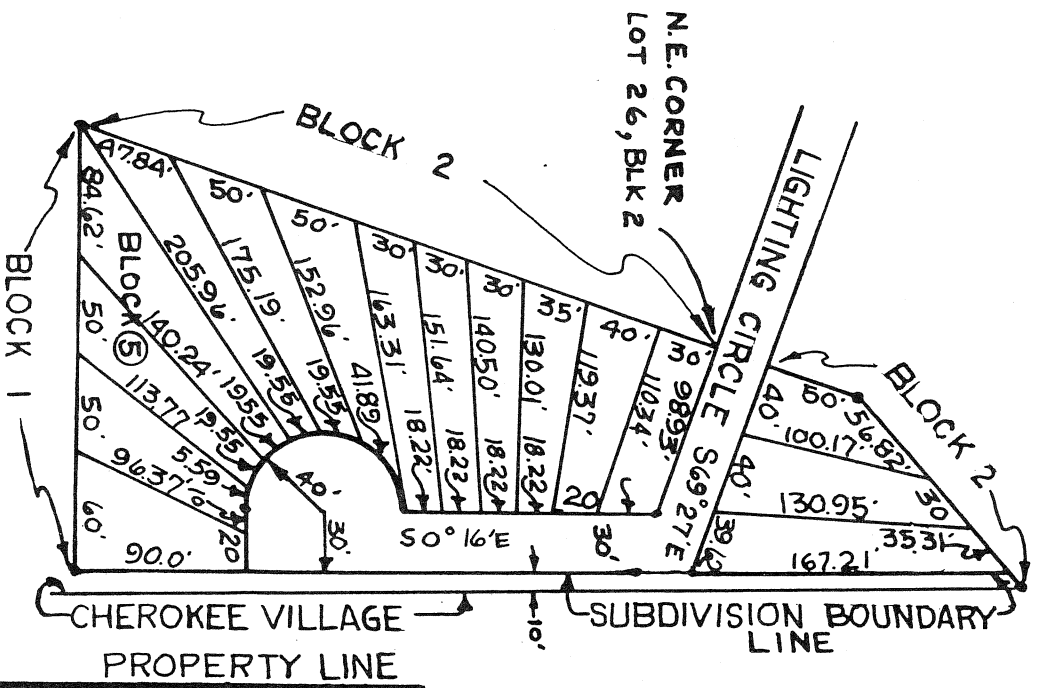
DRAWN BY	RECORD PLAT	REVISIONS
CHECKED DATE	BLOCK 1, 2, 3, 4	
DATE	13 TH ADDITION	
BOOK NO.	CHEROKEE VILLAGE	
JOB NO.	HARDY	DWG. NO.
108	J. F. GORE, Engineer	108-F-79
SCALE 1"=100'	HARDY	ARKANSAS

WE HEREBY CERTIFY THAT WE ARE THE OWNER OF THE PROPERTY SHOWN AND DESCRIBED HEREON THAT WE ADOPT THE PLAN OF SUB-DIVISION AND LOCATE ALL STREETS TO PUBLIC USE AS NOTED.
CHEROKEE VILLAGE DEVELOPMENT CO. INC.

SECRETARY

I HEREBY CERTIFY THAT THE PLAN SHOWN AND DESCRIBED HEREON IS A TRUE AND ACCURATE SURVEY AND THAT ALL CORNERS AND MONUMENTS HAVE BEEN SET AS SHOWN.

NOTE:
 UTILTY EASEMENTS ARE 5 FT. ON SECTIONS 20 AND 19 AND NONE ON BACK LOT LINES EASTWARD AS INDICATED BY DASHED LINES



A PARCEL OF LAND LYING IN THE SE 1/4 SE 1/4 (1.7± AC), OF SECTION 20, T-19-N, R-5-W OF THE FIFTH PRINCIPAL MERIDIAN, SHARP COUNTY, ARKANSAS, AND CONTAINING IN ALL 32.32± ACRES MORE OR LESS.

**BLOCK 5
 13TH ADDITION**

DRAWN <i>JFG</i>	DATE 7/19/84	REVISIONS
CHECKED <i>JFG</i>	DATE 7/19/84	
BOOK NO.		
JOB NO. 108	CHEROKEE VILLAGE	DWG. NO. 108-F-85
SCALE 1" = 100'	HARDY ARKANSAS	
	J. F. GORE Engineer	
	HARDY ARKANSAS	