



CHEROKEE VILLAGE DEVELOPMENT CO. INC.
 1000 WEST 10TH STREET
 CHERRYVILLE, ARKANSAS 72015
 JAMES F. GORE, PRESIDENT
 JAMES F. GORE, SECRETARY

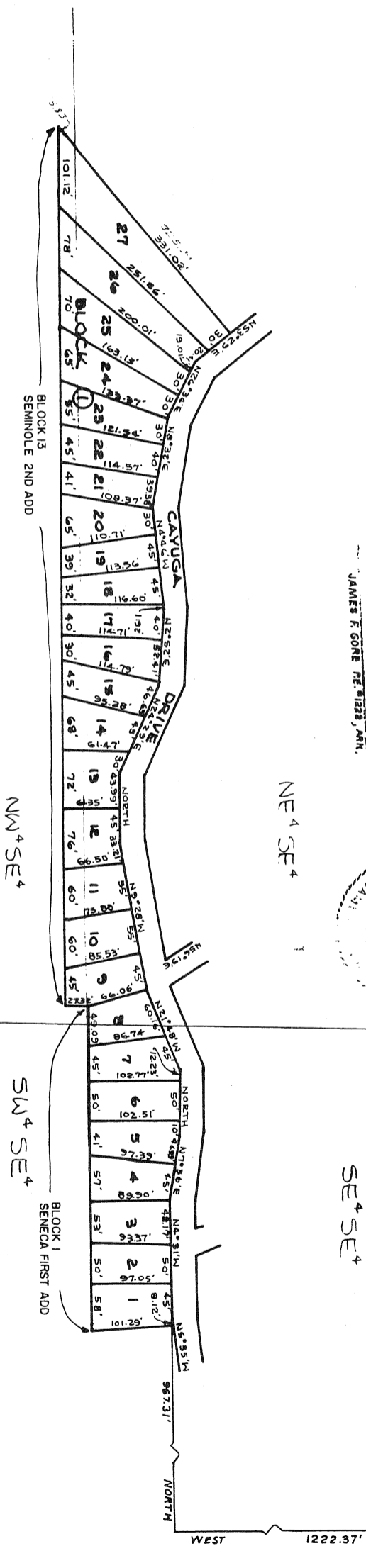
CHEROKEE VILLAGE DEVELOPMENT CO. INC.
 SECRETARY

JAMES F. GORE, PRESIDENT, ARK.
 JAMES F. GORE, SECRETARY, ARK.



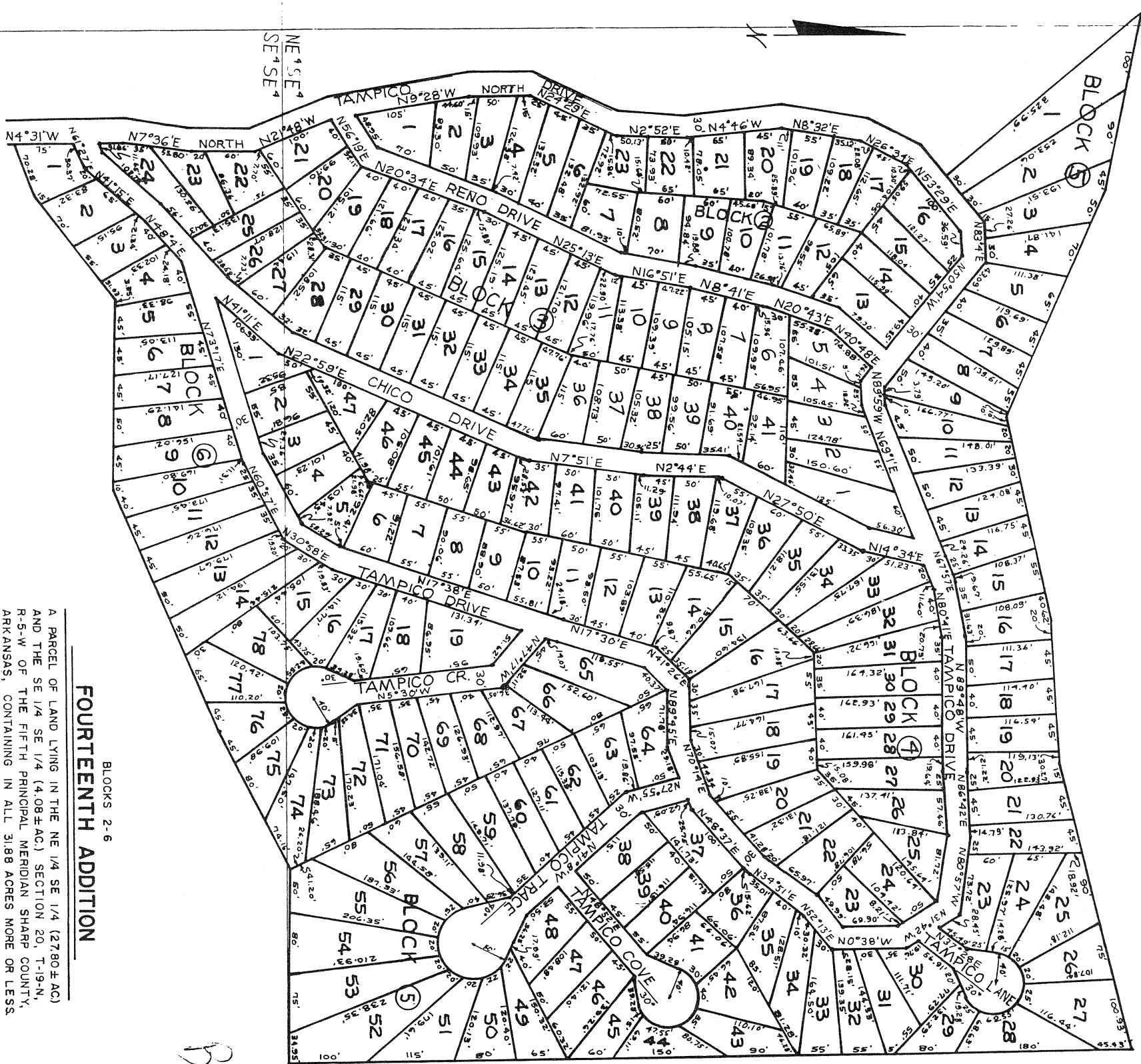
NOTICE: THIS PLAN IS SUBJECT TO THE FIVE FOOT EASEMENTS AND NONE ON THE PARTS OF THE LOTS.

NOTE:
 ALL LOTS ARE SUBJECT TO FIVE FOOT EASEMENTS ON ANY LOT LINE. SUCH EXTRA EASEMENTS TO BE DECLARED BY CHEROKEE VILLAGE DEVELOPMENT CO. INC., WITHOUT NOTICE WHEN NECESSARY FOR THE INSTALLATION OF UTILITIES.

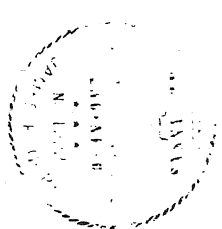


FOURTEENTH ADDITION
 A PARCEL OF LAND LYING IN THE NW 1/4 SE 1/4 (D7) AC, THE NE 1/4 SE 1/4 (45 AC) AND THE SE 1/4 SE 1/4 (40.92 AC) SECTION 20, T-19-N, R-5-W OF THE FIFTH PRINCIPAL MERIDIAN SHARP COUNTY, ARKANSAS, CONTAINING IN ALL 613 ACRES MORE OR LESS.

| | |
|-----------------------------|-----------|
| DRAWN BY ECS | REVISIONS |
| DATE 8/3/62 | |
| CHECKED BY | |
| DATE 8/3/62 | |
| BOOK NO. | |
| JOB NO. 108 | |
| SCALE 1"=100' | |
| RECORD PLAT | |
| BLOCK 1 | |
| FOURTEENTH ADD. | |
| CHEROKEE VILLAGE | |
| HARDY, ARKANSAS | |
| J. F. GORE, ENGINEER | |
| HARDY, ARKANSAS | |
| DWG. NO. 108-F-108 | |



BLOCKS 2-6
FOURTEENTH ADDITION
 A PARCEL OF LAND LYING IN THE NE 1/4 SE 1/4 (27.80± AC.)
 AND THE SE 1/4 SE 1/4 (4.08± AC.) SECTION 20, T-19-N,
 R-5-W OF THE FIFTH PRINCIPAL MERIDIAN SHARP COUNTY,
 ARKANSAS, CONTAINING IN ALL 31.88 ACRES MORE OR LESS



THE PROPERTY COVERED BY THIS PLAT IS SUBJECT TO THE
 LIMITATIONS, RESTRICTIONS, AND EASEMENTS CONTAINED IN BILL
 OF ASSURANCE DATED _____ AND RECORDED IN BOOK
 _____ AND IN THE OFFICE OF THE CIRCUIT COURT CLERK AND
 PAGE _____ IN THE OFFICE OF THE CIRCUIT COURT CLERK AND
 AND EX-OFFICIO RECORDER OF SHARP COUNTY, ARKANSAS, AND
 SAID BILL OF ASSURANCE IS MADE A PART HEREOF BY
 REFERENCE THE SAME AS IF SET OUT IN FULL ON THIS PLAT
 PLAT RECORDED IN PLAT BOOK _____ PAGE _____

SECRETARY

I HEREBY CERTIFY THAT THE PLAT SHOWN AND DESCRIBED
 HEREON IS A TRUE AND ACCURATE SURVEY AND THAT THE
 CORNERS AND MONUMENTS HAVE BEEN SET AS SHOWN.
 JAMES F GORE P. E. # 1222, ARKANSAS

NOTE:
 UTILITY EASEMENTS ARE FIVE FEET ON STREET LINES
 AND NONE ON BACK LOT LINES.

NOTE:
 ALL LOTS ARE SUBJECT TO FIVE FOOT EASEMENTS ON
 ANY LOT LINE. SUCH EXTRA EASEMENTS TO BE
 DECLARED BY CHEROKEE VILLAGE DEVELOPMENT CO. INC.
 WITHOUT NOTICE WHEN NECESSARY FOR THE
 INSTALLATION OF UTILITIES.

*Block 4
 Curves marked by*

| | | | |
|---------------------|--|------------------|--|
| DRAWN 1/11 | | REVISIONS | |
| DATE 1/11/11 | | | |
| CHECKED 1/11 | | | |
| DATE 1/11/11 | | | |
| BOOK NO. | | | |
| JOB NO. 108 | | CHEROKEE VILLAGE | |
| SCALE 1" = 100' | | ARKANSAS | |
| J.F. GORE, ENGINEER | | HARDY, ARKANSAS | |
| 108-F-109 | | DWG. NO. | |