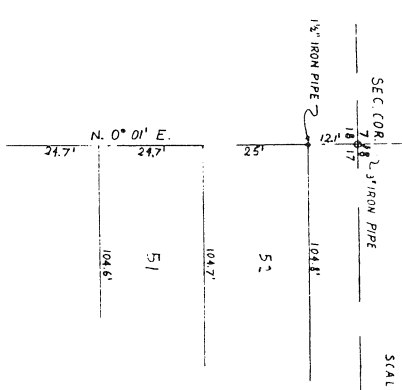


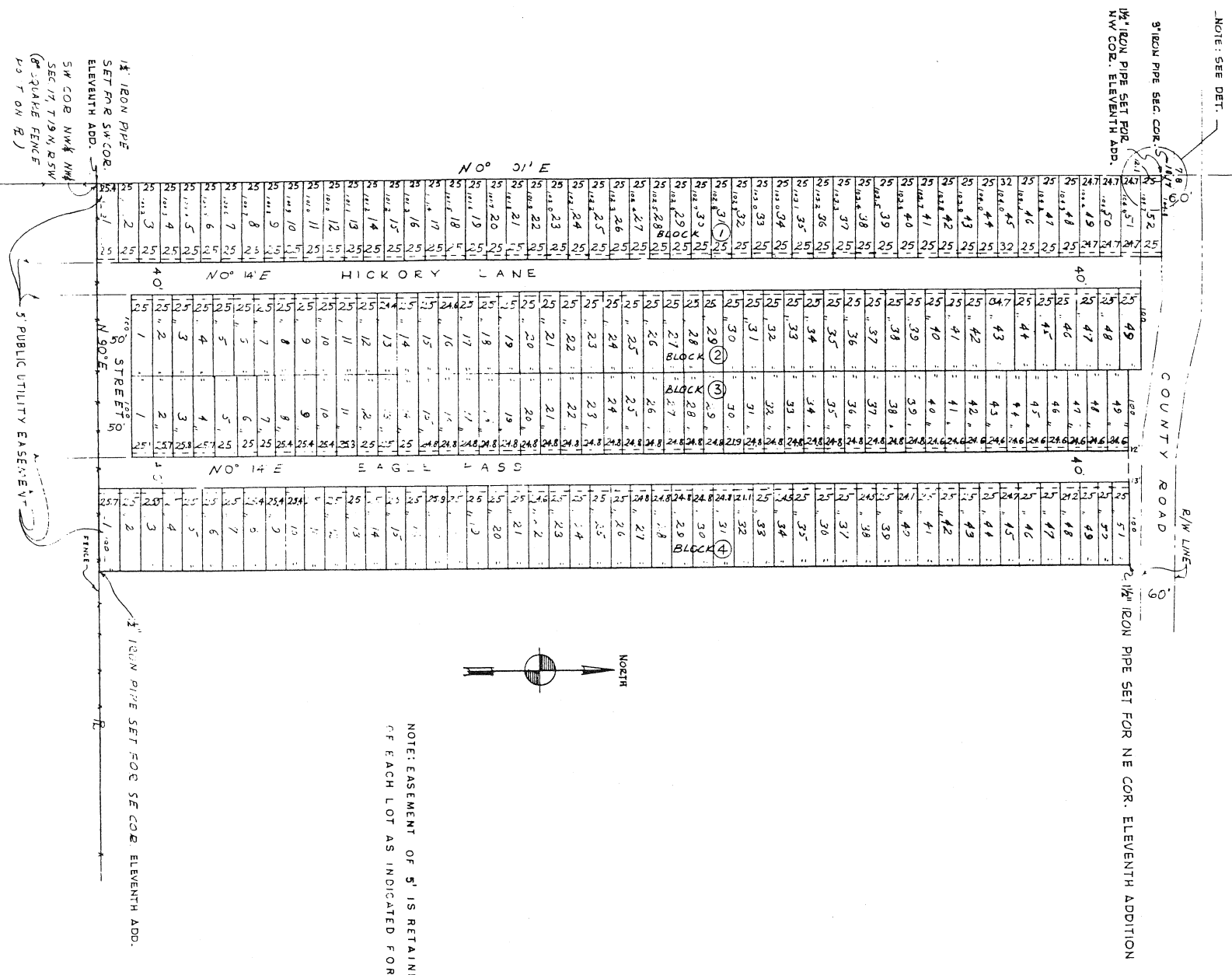
DETAIL

SCALE 1/2"=20'



CHEROKEE VILLAGE ELEVENTH ADDITION

FRACTIONAL PART OF THE W 1/2 OF THE NW 1/4 OF THE NW 1/4 OF SECTION 17 T 19 N RSW OF THE 5TH PRINCIPAL MERIDIAN



NOTE: EASEMENT OF 5' IS RETAINED OFF THE FRONTAGE OF EACH LOT AS INDICATED FOR PUBLIC UTILITIES

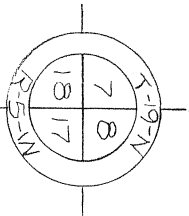
I HEREBY CERTIFY THAT THE PLAT SHOWN AND DESCRIBED HEREON IS A TRUE AND ACCURATE SURVEY AND THAT THE MONUMENTS HAVE BEEN PLACED AS SHOWN.

PAUL R. BYRD, REG. PROFESSIONAL ENG. NO. 1014 ARK.

WE HEREBY CERTIFY THAT WE ARE OWNERS OF THE PROPERTY SHOWN AND DESCRIBED HEREON, THAT WE ADOPT THE PLAN OF SUBDIVISION AND DEDICATE ALL STREETS TO PUBLIC USE AS NOTED. CHEROKEE DEVELOPMENT CO., INC.

Assistant Secretary

DRAWN: SIE	RECORD PLAT	REVISIONS
DATE: 9/22/55		RECORD
CHKD: H.S.J.	CHEROKEE VILLAGE ELEVENTH ADD.	DATE: 10/17/55
DATE: 9/22/55		BY: [Signature]
APPROVED: [Signature]	CHEROKEE VILLAGE - HARDY ARK.	DRAWING NO. 113-F-6
BOOK NO. 113	BYRD ENGINEERING COMPANY	
JOB NO. 113	CONSULTING ENGINEERS	
	WEST MEMPHIS	
	ARKANSAS	



SECTION 18  
SECTION 17

NE 1/4 NE 1/4  
SE 1/4 NE 1/4  
NW 1/4 NW 1/4  
SW 1/4 NW 1/4

SUBDIVISION BOUNDARY LINE N 0° 10' E.

1,320.04'

LOT 5, BLOCK 1,  
11TH ADD.

NOT IN  
THIS PLAT

HICKORY LANE

N 00° 10' E.

40'

LOT 2, BLOCK 2,  
11TH ADD.

NOT IN  
THIS PLAT



LOT 1, BLOCK 3,  
11TH ADD.

NOT IN THIS PLAT

S 40° 38' E

S 89° 40' E.

NORTH LAKESHORE DR.  
N 41° 07' E.

EAGLE PASS

N 00° 25' E.

40'

LOT 2, BLOCK 4,  
11TH ADD.

NOT IN  
THIS PLAT

THE PROPERTY COVERED BY THIS PLAT IS SUBJECT TO THE LIMITATIONS, RESTRICTIONS, AND EASEMENTS CONTAINED IN BILL OF ASSURANCE DATED \_\_\_\_\_ IN THE OFFICE AND RECORDED IN BOOK 4 PAGE \_\_\_\_\_ OF THE CIRCUIT COURT CLERK AND EX-OFFICIO RECORDER OF SHARP COUNTY, ARKANSAS, AND SAID BILL OF ASSURANCE IS MADE A PART HEREOF BY REFERENCE THE SAME AS IF SET OUT IN FULL ON THIS PLAT PLAT RECORDED IN PLAT BOOK PAGE \_\_\_\_\_

NOTE:  
ALL LOTS ARE SUBJECT TO FIVE FOOT EASEMENTS ON ANY LOT LINE. SUCH EXTRA EASEMENTS MAY BE DECLARED BY CHEROKEE VILLAGE DEVELOPMENT COMPANY, INC., WITHOUT NOTICE WHEN NECESSARY FOR THE INSTALLATION OF UTILITIES.

NOTE:  
UTILITY EASEMENTS ARE FIVE FEET ON STREET LINES.

I HEREBY CERTIFY THAT THE PLAT SHOWN AND DESCRIBED HEREON IS A TRUE AND ACCURATE SURVEY AND THAT THE CORNERS AND MONUMENTS HAVE BEEN SET AS SHOWN.

JAMES F. GORE P.E. #12222ARK

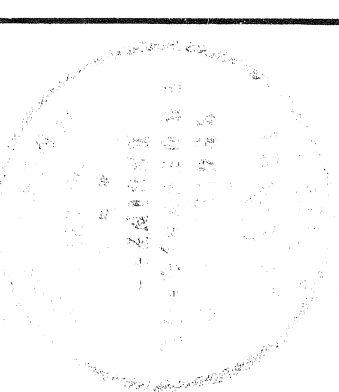
A PARCEL OF LAND LYING IN THE NW 1/4 NW 1/4 (0043 AC.) OF SECTION 8, T-19-N, R-5-W OF THE FIFTH PRINCIPAL MERIDIAN, SHARP COUNTY, ARKANSAS, AND CONTAINING IN ALL 0043 ACRES, MORE OR LESS.

ELEVENTH ADDITION

REPLAT  
LOTS 1,2,3,4, BLOCK 1,  
LOT 1, BLOCK 2,  
LOT 1, BLOCK 4,

WE, THE UNDERSIGNED, BEING THE OWNER OF ALL THE PROPERTY DESCRIBED ON THIS REPLAT OF LOTS 1,2,3,4, BLOCK 1, LOT 1, BLOCK 2, LOT 1, BLOCK 4, ELEVENTH ADDITION, HEREBY CONSENT TO THE REPLATTING OF SAID PROPERTY AND DEDICATE ALL STREETS TO PUBLIC USE AS NOTED.  
CHEROKEE VILLAGE DEVELOPMENT CO. INC.

ASS'T SECRETARY



APPROVED:  
DATE:

REPLAT

LOTS 1,2,3,4, BLOCK 1, LOT 1, BLOCK 2, LOT 1, BLOCK 4,  
ELEVENTH ADDITION  
CHEROKEE VILLAGE, ARKANSAS

CHEROKEE VILLAGE DEV. CO., INC.  
ENGINEERING & PLANNING DIVISION  
CHEROKEE VILLAGE, ARKANSAS

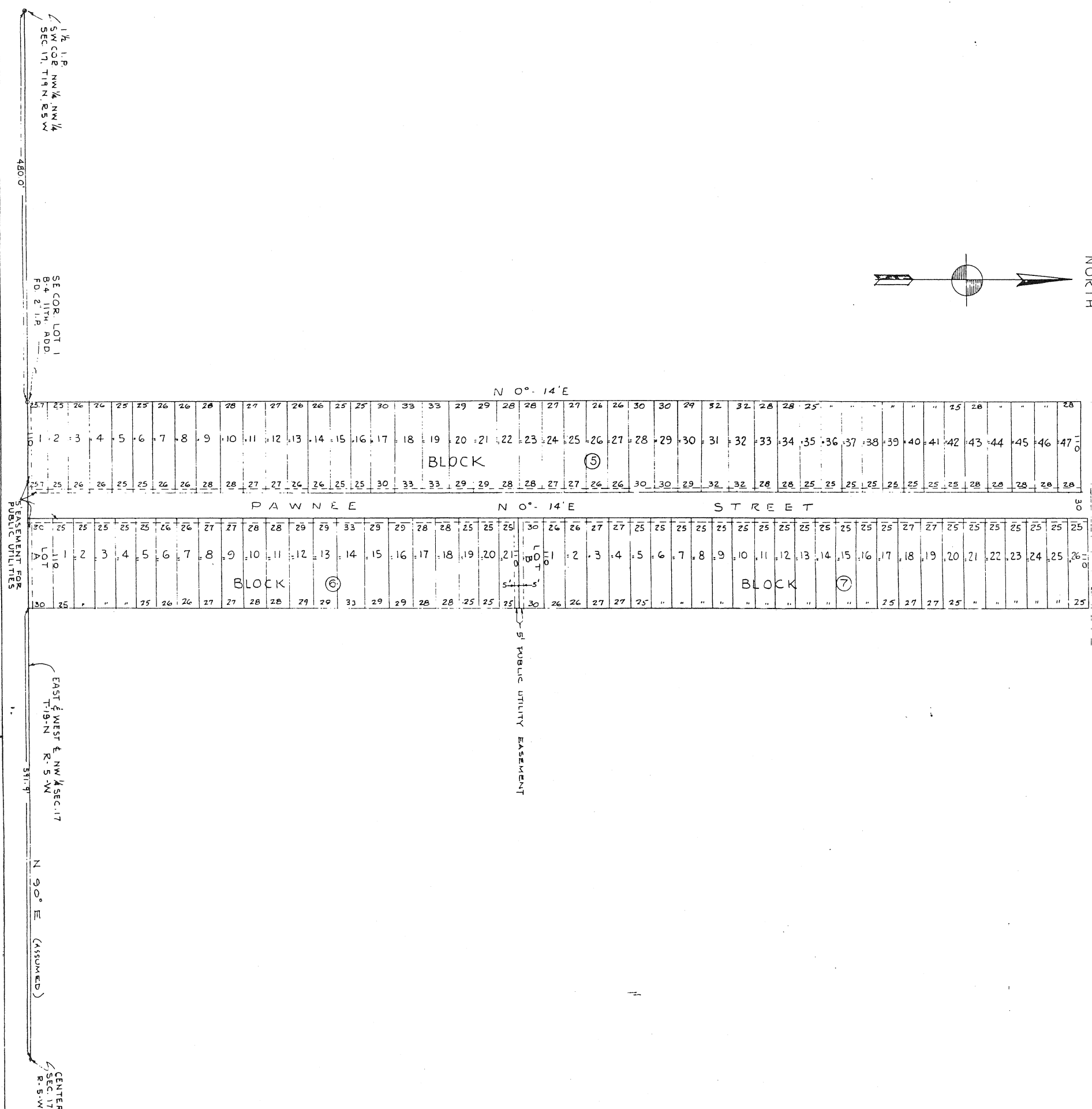
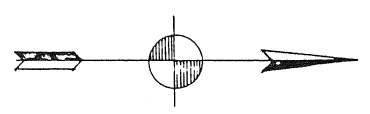
REVISIONS  
DATE BY DESCRIPTION

DRAWN: SHEET 1 OF 1  
DATE: 1-5-67

CHECKED: DWG. NO. 8-CV-110-RR  
DATE: 1-5-67

JOB NO. 108-F-191 SCALE: 1" = 50'

NORTH



COUNTY ROAD

**CHEROKEE VILLAGE ELEVEN-A ADDITION**

A FRACTIONAL PART OF THE NW 1/4 OF THE NW 1/4 OF SECTION 17, T.19N. R.5W OF THE 5th PRINCIPAL MERIDIAN CONTAINING IN ALL 7.37 ACRES MORE OR LESS.  
SCALE 1" = 60'

**NOTE:**  
EASEMENT OF 5' IS RETAINED OFF THE FRONTAGE OF EACH LOT FOR PUBLIC UTILITIES

I HEREBY CERTIFY THAT THE PLAT SHOWN AND DESCRIBED HEREON IS A TRUE AND ACCURATE SURVEY AND THAT THE MONUMENTS HAVE BEEN PLACED AS SHOWN.

JAMES F. GORE REGISTERED PROFESSIONAL ENG. NO. 12722 AR.

WE HEREBY CERTIFY THAT WE ARE THE OWNER OF THE PROPERTY SHOWN AND DESCRIBED HEREON, THAT WE ADOPT THE PLAN OF SUBDIVISION AND DEDICATE ALL STREETS TO PUBLIC USE AS NOTED. CHEROKEE VILLAGE DEVELOPMENT CO., INC.

SECRETARY

REVISIONS	DATE	BY	DESCRIPTION

DEPT. AND DATE	127
CHECKED BY DATE	6/11/56
APPROVED BY DATE	6/11/56
SCALE	1" = 60'
BOOK NO.	127
JOB NO.	127
BYRD GORE & ASSOCIATES CONSULTING ENGINEERS ARKANSAS	
RECORD PLAT	
ELEVEN-A ADDITION	
CHEROKEE VILLAGE SHARP COUNTY, ARKANSAS	
127-F-18	