

THE PROPERTY COVERED BY THIS PLAT IS SUBJECT TO THE LIMITATIONS, RESTRICTIONS, AND EASEMENTS CONTAINED IN BILL OF ASSURANCE DATED AND RECORDED IN BOOK _____ PAGE _____ IN THE OFFICE OF THE CIRCUIT COURT CLERK AND EX-OFFICIO RECORDER OF FLITON COUNTY, ARKANSAS, AND SAID BILL OF ASSURANCE IS MADE A PART HEREOF BY REFERENCE THE SAME AS IF SET OUT IN FULL ON THIS PLAT. PLAT RECORDED IN PLAT BOOK _____ PAGE _____

WE HEREBY CERTIFY THAT WE ARE THE OWNER OF THE PROPERTY SHOWN AND DESCRIBED HEREON, THAT WE ADOPT THE PLAN OF SUBDIVISION, AND DEDICATE ALL STREETS TO PUBLIC USE AS NOTED.

CHEROKEE VILLAGE DEVELOPMENT COMPANY, INCORPORATED

SECRETARY

NOTE: UTILITY AND DRAINAGE EASEMENTS ARE 7 1/2 FEET ON ALL FRONT AND REAR LOT LINES AND 5 FEET ON ALL SIDE LOT LINES.

I HEREBY CERTIFY THAT THE PLAT SHOWN AND DESCRIBED HEREON IS A TRUE AND ACCURATE SURVEY AND THAT THE CORNERS AND MONUMENTS HAVE BEEN SET AS SHOWN.

JAMES F. GORE P.E. #222, ARK.

NOTE: SCREENING EASEMENTS MAY CONTAIN TREES, SHRUBS, FENCES OR WALLS TO PROTECT AND BEAUTIFY THE EASEMENT. NO BUILDING OR OTHER STRUCTURE SHALL BE ERRECTED OR PLACED OR ALLOWED TO REMAIN IN THE SCREENING EASEMENT AREA NO VEHICULAR ACCESS OVER THE SCREENING EASEMENT SHALL BE PERMITTED EXCEPT TEMPORARILY FOR THE PURPOSE OF INSTALLATION AND MAINTENANCE OF SCREENING, UTILITY, AND DRAINAGE FACILITIES.

CHEYENNE ADDITION
BLOCKS 12, 14, 15, 16, 17, 18, 19, 20
PART OF BLK. 3

A PARCEL OF LAND LYING IN THE SW 1/4 SE 1/4 (12.97 AC) SE 1/4 SE 1/4 (15.40 AC) OF SECTION 24, NW 1/4 NE 1/4 (38.55 AC) NE 1/4 NE 1/4 (23.94 AC) SW 1/4 NE 1/4 (38.13 AC) SE 1/4 NE 1/4 (40.00 AC) OF SECTION 25, ALL BEING IN T-19-N, R-6-W OF THE FIFTH PRINCIPAL MERIDIAN, FLITON COUNTY, ARKANSAS, AND CONTAINING IN ALL 83.88 ACRES, MORE OR LESS.

RECORD PLAT

BLOCKS 12, 14, 15, 16, 17, 18, 19, 20
PART OF BLK. 3
CHEYENNE ADDITION

APPROVED:	DATE:	REVISIONS:
CHEROKEE VILLAGE DEV. CO., INC.	10/17/79	DATE BY DESCRIPTION:
ENGINEERING & PLANNING DIVISION		
CHEROKEE VILLAGE, ARKANSAS		
DRAWN: [Signature]	CHECKED: [Signature]	SHEET
DATE: 10/17/79	DATE: 10/17/79	1 OF 1
JOB NO. 105	SCALE: 1" = 100'	

THE PROPERTY COVERED BY THIS PLAT IS SUBJECT TO THE LIMITATIONS, RESTRICTIONS, AND EASEMENTS, CONTAINED IN BILL OF ASSURANCE DATED _____ AND RECORDED IN BOOK _____ PAGE _____ IN THE OFFICE OF THE CIRCUIT COURT CLERK AND EX-OFFICIO RECORDER OF FULTON COUNTY, ARKANSAS AND SAID BILL OF ASSURANCE IS MADE A PART HEREOF BY REFERENCE THE SAME AS IF SET OUT IN FULL ON THIS PLAT. PLAT RECORDED IN PLAT BOOK _____ PAGE _____.

WE HEREBY CERTIFY THAT WE ARE THE OWNER OF THE PROPERTY SHOWN AND DESCRIBED HEREON, THAT WE ADOPT THE PLAN OF SUBDIVISION, AND DEDICATE ALL STREETS TO PUBLIC USE AS NOTED.
 CHEROKEE VILLAGE DEVELOPMENT COMPANY, INC.

SECRETARY

NOTE:
 UTILITY AND DRAINAGE EASEMENTS ARE 7 1/2 FEET ON ALL FRONT AND REAR LOT LINES AND 5 FEET ON ALL SIDE LOT LINES.

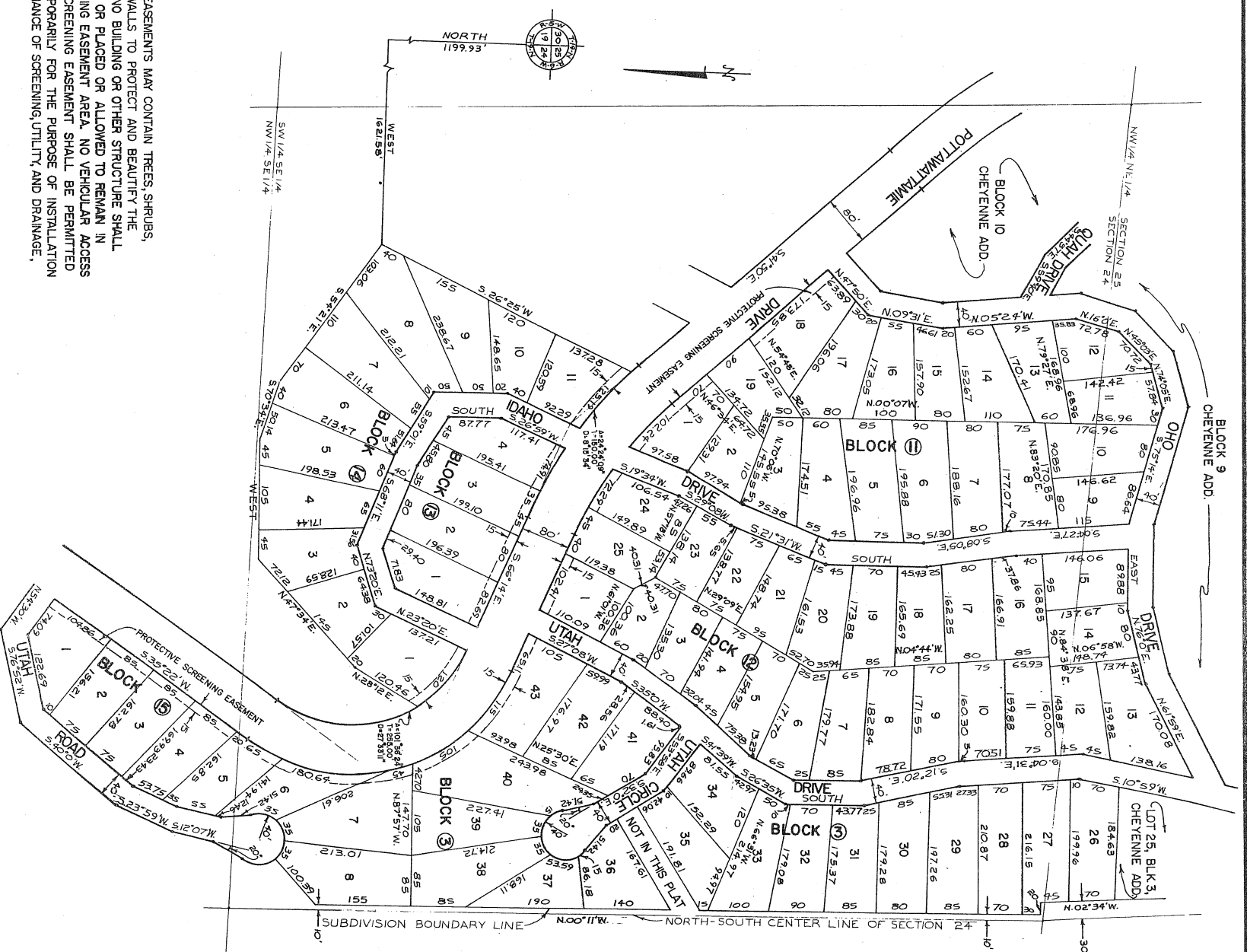
I HEREBY CERTIFY THAT THE PLAT SHOWN AND DESCRIBED HEREON IS A TRUE AND ACCURATE SURVEY AND THAT THE CORNERS AND MONUMENTS HAVE BEEN SET AS SHOWN.

JAMES F. GORE, PE, 1222, ARK.

NOTE:
 SCREENING EASEMENTS MAY CONTAIN TREES, SHRUBS, FENCES OR WALLS TO PROTECT AND BEAUTIFY THE EASEMENT. NO BUILDING OR OTHER STRUCTURE SHALL BE ERRECTED OR PLACED OR ALLOWED TO REMAIN IN THE SCREENING EASEMENT AREA. NO VEHICULAR ACCESS OVER THE SCREENING EASEMENT SHALL BE PERMITTED EXCEPT TEMPORARILY FOR THE PURPOSE OF INSTALLATION AND MAINTENANCE OF SCREENING, UTILITY, AND DRAINAGE FACILITIES.

CHEYENNE ADDITION
 BLOCKS 11, 12, 13, 14, 15,
 A PART OF BLOCK 3

A PARCEL OF LAND LYING IN THE NW 1/4 SE 1/4 (207 AC) SW 1/4 SE 1/4 (2947 AC) OF SECTION 24, NW 1/4 NE 1/4 (264 AC) OF SECTION 25, ALL BEING IN T-19-N, R-6-W OF THE FIFTH PRINCIPAL MERIDIAN, FULTON COUNTY, ARKANSAS AND CONTAINING IN ALL 34.18 ACRES, MORE OR LESS.



	APPROVED:	DATE:
	CHEROKEE VILLAGE DEV. CO. INC. ENGINEERING & PLANNING DIVISION CHEROKEE VILLAGE, ARKANSAS	RECORD PLAT BLOCKS 11, 12, 13, 14, 15, A PART OF BLOCK 3, CHEYENNE ADDITION
DRAWN: [Signature] DATE: [Date] CHECKED: [Signature] DATE: [Date] JOB NO. 108 SCALE: 1"=100'	SHEET 1 OF 1 DWG. NO. 08-F-76 108	