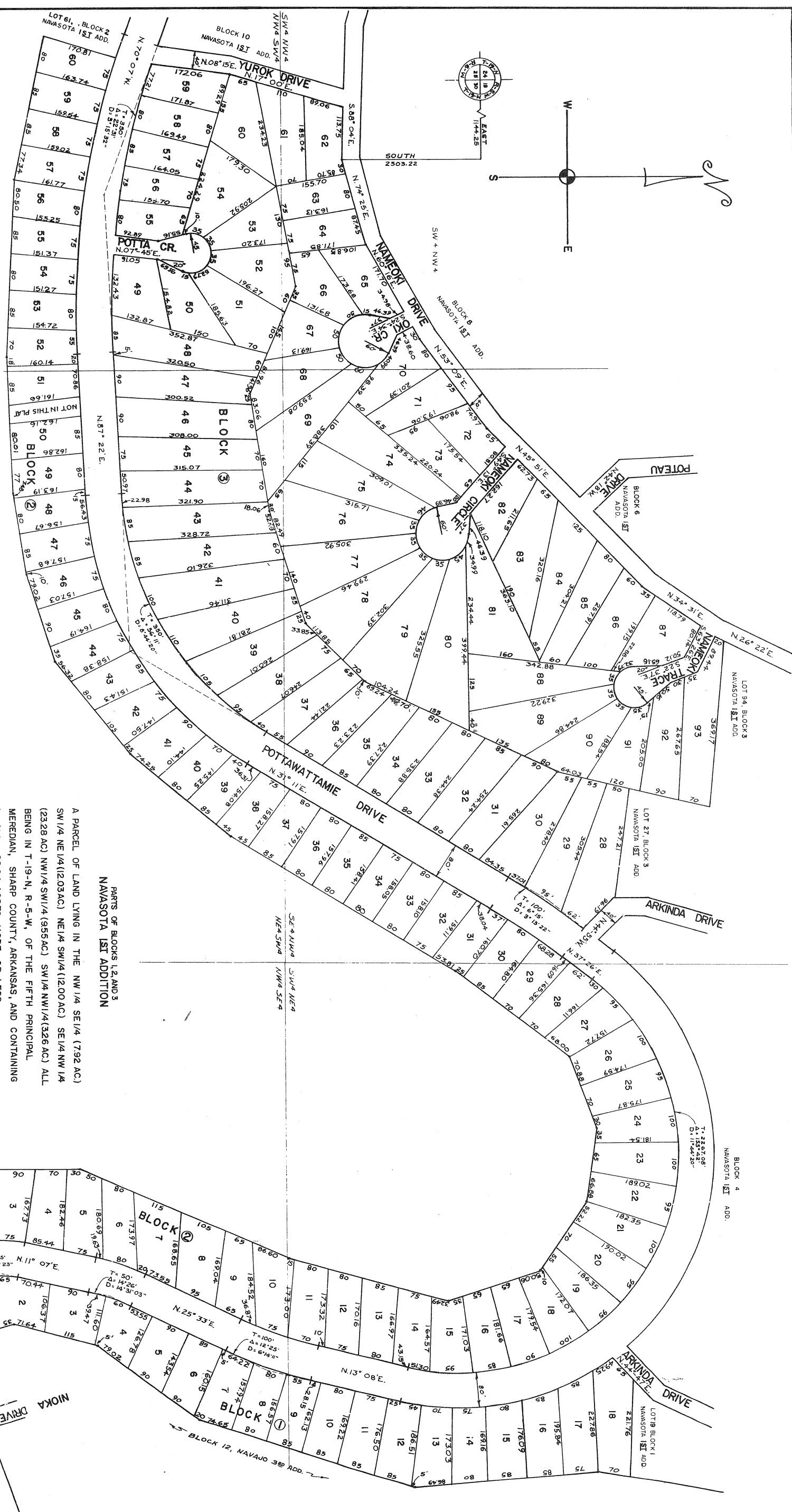


W
E



PARTS OF BLOCKS 1, 2, AND 3
NAVASOTA 1ST ADDITION

A PARCEL OF LAND LYING IN THE NW 1/4 SE 1/4 (7.92 AC.)
SW 1/4 NE 1/4 (12.03 AC.) NE 1/4 SW 1/4 (12.00 AC.) SE 1/4 NW 1/4
(23.28 AC.) NW 1/4 SW 1/4 (9.55 AC.) SW 1/4 NW 1/4 (32.6 AC.) ALL
BEING IN T-19-N, R-5-W, OF THE FIFTH PRINCIPAL
MERIDIAN, SHARP COUNTY, ARKANSAS, AND CONTAINING
IN ALL 68.04 ACRES, MORE OR LESS.

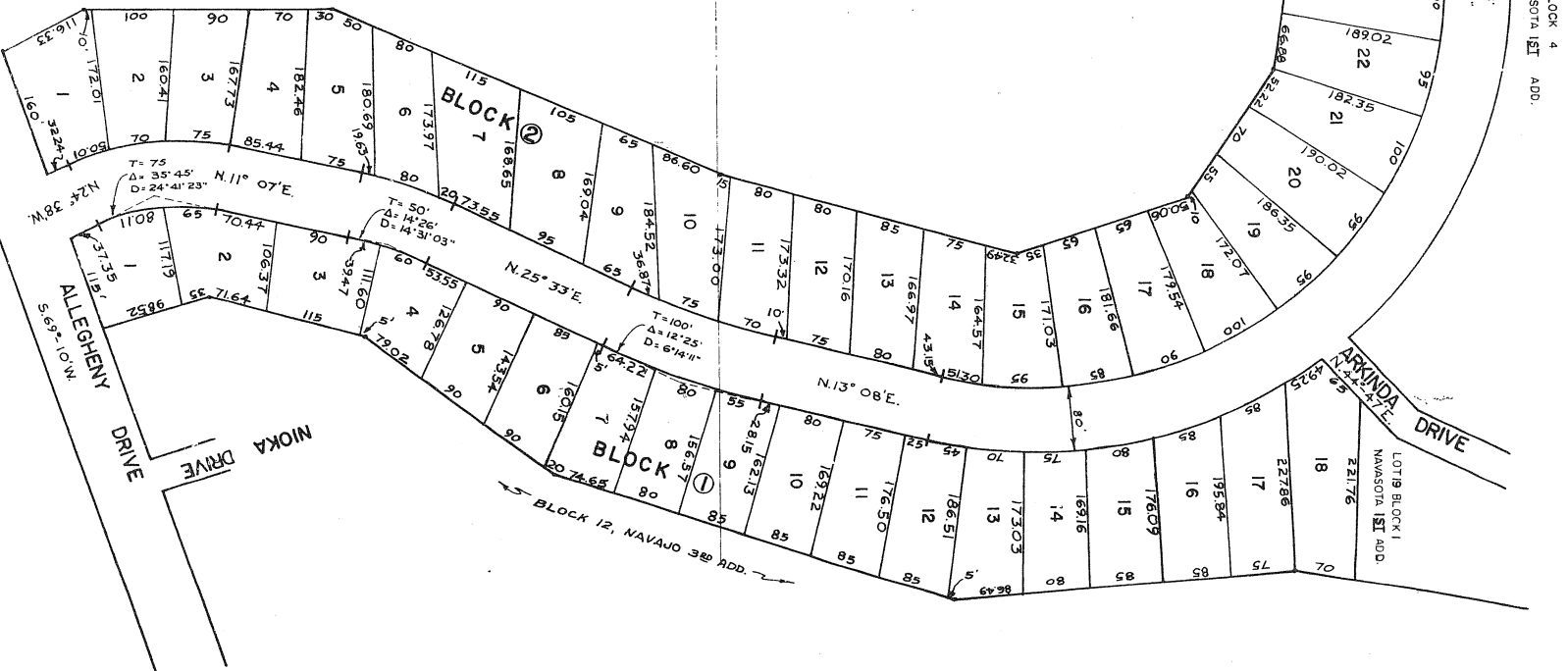
NOTE:
UTILITY EASEMENTS ARE FIVE FEET ON STREET LINES

I HEREBY CERTIFY THAT THE PLAT SHOWN AND
DESCRIBED HEREON IS A TRUE AND ACCURATE
SURVEY AND THAT THE CORNERS AND MONUMENTS
HAVE BEEN SET AS SHOWN.

JAMES F. GORE P.E. 1222, ARK.

THE PROPERTY COVERED BY THIS PLAT IS SUBJECT
TO THE LIMITATIONS, RESTRICTIONS, AND EASEMENTS
CONTAINED IN BILL OF ASSURANCE DATED _____
AND RECORDED IN BOOK _____ PAGE _____ IN THE OFFICE
OF THE CIRCUIT COURT CLERK AND EX-OFFICIO
RECORDER OF SHARP COUNTY, ARKANSAS AND SAID BILL
OF ASSURANCE IS MADE A PART HEREOF BY REFERENCE
THE SAME AS IF SET OUT IN FULL ON THIS PLAT. PLAT
RECORDED IN PLAT BOOK _____ PAGE _____
WE HEREBY CERTIFY THAT WE ARE THE OWNER OF
THE PROPERTY SHOWN AND DESCRIBED HEREON, THAT
WE ADOPT THE PLAN OF SUBDIVISION, AND DEDICATE ALL
STREETS TO PUBLIC USE AS NOTED.
CHEROKEE VILLAGE DEVELOPMENT COMPANY, INC.
SECRETARY

NOTE:
ALL LOTS ARE SUBJECT TO FIVE FOOT EASEMENTS
ON ANY LOT LINE. SUCH EXTRA EASEMENTS MAY BE
DECLARED BY CHEROKEE VILLAGE DEVELOPMENT
COMPANY, INC., WITHOUT NOTICE WHEN NECESSARY
FOR THE INSTALLATION OF UTILITIES.



RECORD PLAT

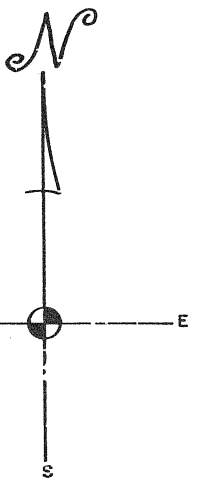
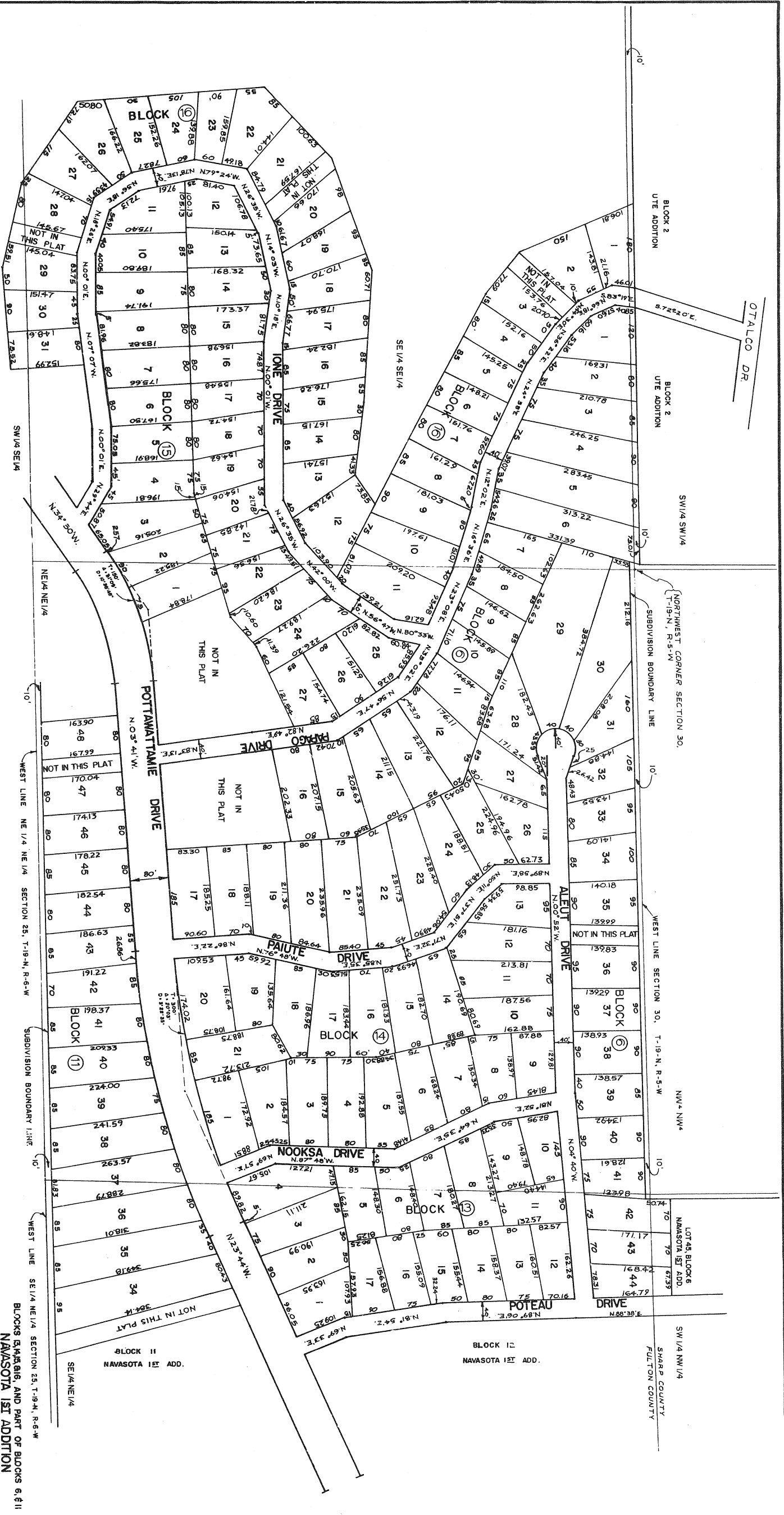
PARTS OF BLOCKS 1, 2, AND 3
NAVASOTA 1ST ADDITION
CHEROKEE VILLAGE,
CHEROKEE VILLAGE, ARKANSAS

ENGINEERING DIVISION
CHEROKEE VILLAGE DEVELOPMENT CO., INC.
CHEROKEE VILLAGE, ARKANSAS

REVISIONS	DATE BY	DESCRIPTION

APPROVED: _____
DATE: _____

DRAWN BY: _____
DATE: 4/16/15
CHECKED BY: _____
DATE: 7/25/15
DWG. NO. 108
SHEET 108-P-1469
7 OF 7



THE PROPERTY COVERED BY THIS PLAT IS SUBJECT TO THE LIMITATIONS, RESTRICTIONS, AND EASEMENTS CONTAINED IN BILL OF ASSURANCE DATED AND RECORDED IN BOOK _____ PAGE _____ IN THE OFFICE OF THE CIRCUIT COURT CLERK AND EX-OFFICIO RECORDER OF SHARP COUNTY, ARKANSAS AND SAID BILL OF ASSURANCE IS MADE A PART HEREOF BY REFERENCE THE SAME AS IF SET OUT IN FULL ON THIS PLAT. PLAT RECORDED IN PLAT BOOK _____ PAGE _____

WE HEREBY CERTIFY THAT WE ARE THE OWNER OF THE PROPERTY SHOWN AND DESCRIBED HEREON, THAT WE ADOPT THE PLAN OF SUBDIVISION, AND DEDICATE ALL STREETS TO PUBLIC USE AS NOTED.

CHEROKEE VILLAGE DEVELOPMENT COMPANY, INCORPORATED

SECRETARY

NOTE: ALL LOTS ARE SUBJECT TO FIVE FOOT EASEMENTS ON ANY LOT LINE, SUCH EXTRA EASEMENTS MAY BE DECLARED BY CHEROKEE VILLAGE DEVELOPMENT COMPANY, INC., WITHOUT NOTICE WHEN NECESSARY FOR THE INSTALLATION OF UTILITIES.

NOTE: UTILITY EASEMENTS ARE FIVE FEET ON STREET LINES.

I HEREBY CERTIFY THAT THE PLAT SHOWN AND DESCRIBED HEREON IS A TRUE AND ACCURATE SURVEY AND THAT THE CORNERS AND MONUMENTS HAVE BEEN SET AS SHOWN.

JAMES F. GORE, JR. THE 1232, A.R.K.

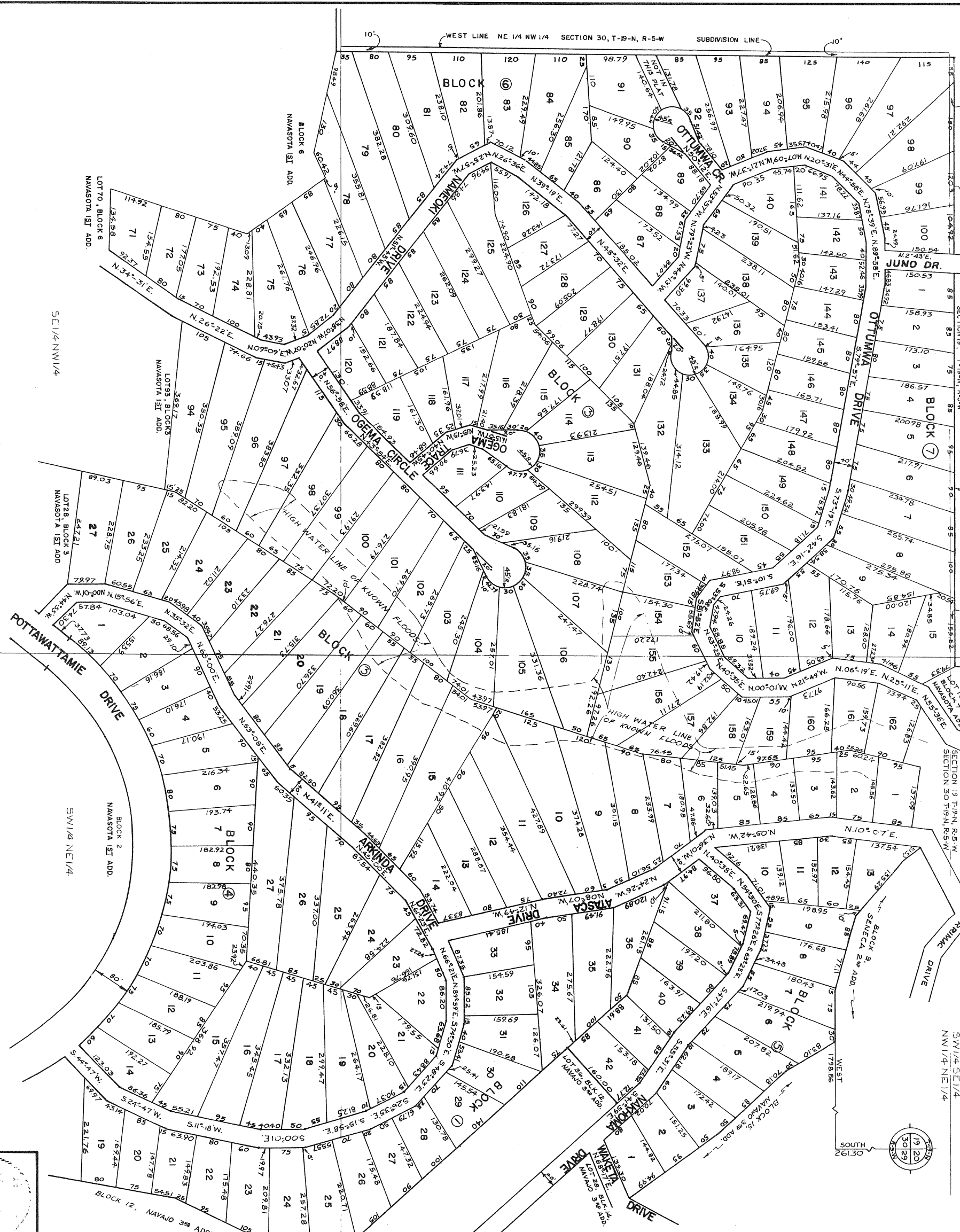
THE PROPERTY COVERED BY THIS PLAT IS SUBJECT TO THE LIMITATIONS, RESTRICTIONS, AND EASEMENTS CONTAINED IN BILL OF ASSURANCE DATED AND RECORDED IN BOOK _____ PAGE _____ IN THE OFFICE OF THE CIRCUIT COURT CLERK AND EX-OFFICIO RECORDER OF FULTON COUNTY, ARKANSAS AND SAID BILL OF ASSURANCE IS MADE A PART HEREOF BY REFERENCE THE SAME AS IF SET OUT IN FULL ON THIS PLAT. PLAT RECORDED IN PLAT BOOK _____ PAGE _____

RECORD PLAT

APPROVED	DATE	11/3/65
BLOCKS 13, 14, 15, 16, 17, 18, 19, 20, 21, 22, 23, 24, 25, 26, 27, 28, 29, 30, 31, 32, 33, 34, 35, 36, 37, 38, 39, 40, 41, 42, 43, 44, 45, 46, 47, 48, 49, 50, 51, 52, 53, 54, 55, 56, 57, 58, 59, 60, 61, 62, 63, 64, 65, 66, 67, 68, 69, 70, 71, 72, 73, 74, 75, 76, 77, 78, 79, 80, 81, 82, 83, 84, 85, 86, 87, 88, 89, 90, 91, 92, 93, 94, 95, 96, 97, 98, 99, 100		
DRAWN BY: J.F.G.		
DATE: 11/3/65		
CHECKED BY: J.F.G.		
DATE: 11/3/65		
JOB NO. 108		
DWG. NO. 108-F-171		
SHEET 1 OF 1		

A PARCEL OF LAND LYING IN THE SW 1/4 SW 1/4 (0.15 AC.) OF SECTION 19, SW 1/4 NW 1/4 (0.21 AC.) OF SECTION 30, BOTH SECTIONS BEING IN T-19-N, R-5-W OF THE FIFTH PRINCIPAL MERIDIAN, SHARP COUNTY, ARKANSAS, THE SE 1/4 SE 1/4 (2.09 AC.) SW 1/4 SE 1/4 (0.32 AC.) OF SECTION 24, NE 1/4 NE 1/4 (34.39 AC.), SE 1/4 NE 1/4 (7.8 AC.) OF SECTION 25, BOTH SECTIONS BEING IN T-19-N, R-6-W OF THE FIFTH MERIDIAN, FULTON COUNTY, ARKANSAS, AND ALL THE ABOVE DESCRIBED LAND CONTAINS 63.75 ACRES, MORE OR LESS.

BLOCKS 13, 14, 15, 16, 17, 18, 19, 20, 21, 22, 23, 24, 25, 26, 27, 28, 29, 30, 31, 32, 33, 34, 35, 36, 37, 38, 39, 40, 41, 42, 43, 44, 45, 46, 47, 48, 49, 50, 51, 52, 53, 54, 55, 56, 57, 58, 59, 60, 61, 62, 63, 64, 65, 66, 67, 68, 69, 70, 71, 72, 73, 74, 75, 76, 77, 78, 79, 80, 81, 82, 83, 84, 85, 86, 87, 88, 89, 90, 91, 92, 93, 94, 95, 96, 97, 98, 99, 100



SCALE 1"=100'

APPROVED
DATE: 12/1/80

RECORD PLAT	
BLOCKS 4, 5, 6, 7 AND PARTS OF BLOCKS 1, 3 & 6	DATE BY DESCRIPTION
NAVASOTA 1ST ADDITION	
CHEROKEE VILLAGE, ARKANSAS	
ENGINEERING DIVISION	
CHEROKEE VILLAGE DEVELOPMENT COMPANY, INC.	
CHEROKEE VILLAGE, ARKANSAS	
DRAWN BY	JOB NO.
CHECKED	108
DATE	
SHEET	DWG. NO.
1 OF 7	108-F-170

A PARCEL OF LAND LYING IN THE NE 1/4 NW 1/4 (4011AC), SE 1/4 NW 1/4 (13.25AC), NW 1/4 NE 1/4 (28.10AC), SW 1/4 NE 1/4 (14.35AC), SE 1/4 NE 1/4 (0.10AC), OF SECTION 30, SW 1/4 SW 1/4 (0.30AC), SW 1/4 SE 1/4 (0.05 OF SECTION 19, ALL BEING IN T-19-N, R-5-W OF THE FIFTH PRINCIPAL MERIDIAN, SHARP COUNTY, ARKANSAS AND CONTAINING IN ALL 96.11 ACRES, MORE OR LESS.

JAMES F. GORE PE. 1222, ARK.

NOTE:
UTILITY EASEMENTS ARE FIVE FEET ON STREET LINES.

NOTE:
ALL LOTS ARE SUBJECT TO FIVE FOOT EASEMENTS ON ANY LOT LINE, SUCH EXTRA EASEMENTS MAY BE DECLARED BY CHEROKEE VILLAGE DEVELOPMENT COMPANY, INC. WITHOUT NOTICE WHEN NECESSARY FOR THE INSTALLATION OF UTILITIES

WE HEREBY CERTIFY THAT WE ARE THE OWNER OF THE PROPERTY SHOWN AND DESCRIBED HEREON, THAT WE ADOPT THE PLAN OF SUBDIVISION, AND DEDICATE ALL STREETS TO PUBLIC USE AS NOTED.

CHEROKEE VILLAGE DEVELOPMENT COMPANY INC.

SECRETARY

THE PROPERTY COVERED BY THIS PLAT IS SUBJECT TO THE LIMITATIONS, RESTRICTIONS, AND EASEMENTS AND CONTAINED IN BILL OF ASSURANCE DATED _____ AND RECORDED IN BOOK _____ PAGE _____ IN THE OFFICE OF THE CIRCUIT COURT CLERK AND EX-OFFICIO RECORDER OF SHARP COUNTY, ARKANSAS AND SAID BILL OF ASSURANCE IS MADE A PART HEREOF BY REFERENCE THE SAME AS IF SET OUT IN FULL ON THIS PLAT. PLAT RECORDED IN PLAT BOOK _____ PAGE _____

