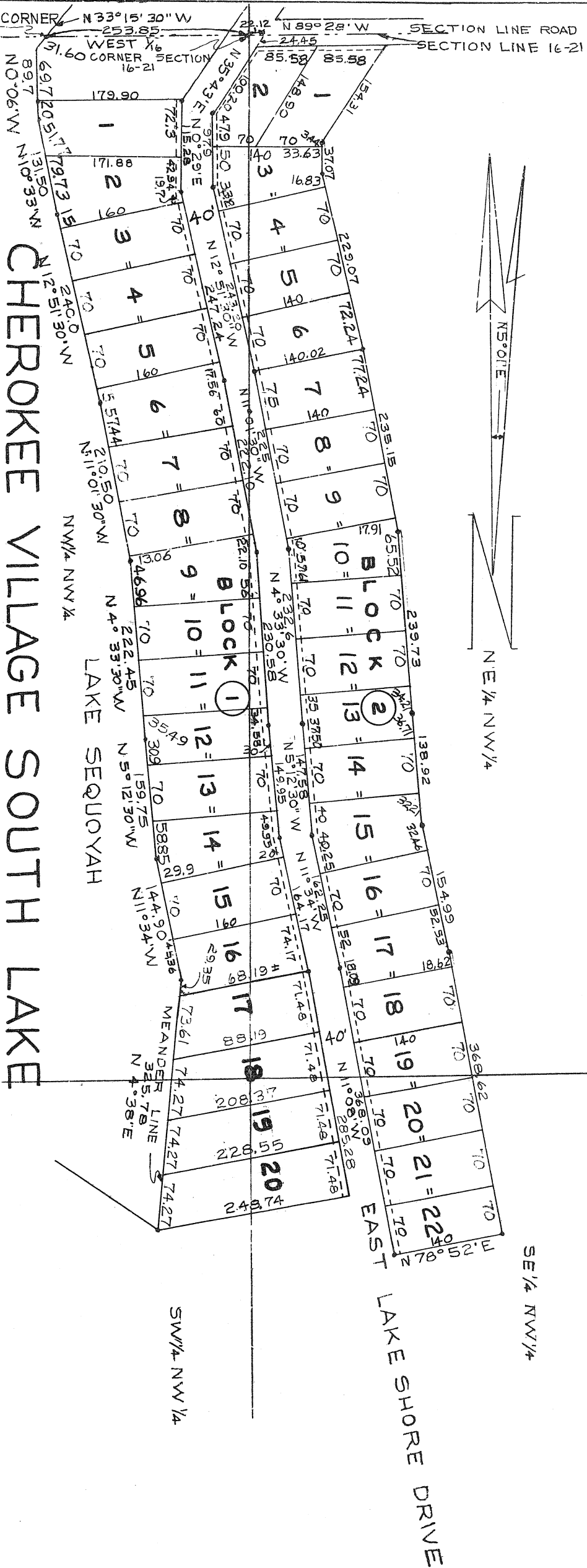
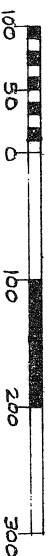


MEANDER CORNER N 33° 15' 30" W
 WEST CORNER 16-21 SECTION
 SECTION LINE ROAD
 SECTION LINE 16-21

CHEROKEE VILLAGE SOUTH LAKE ADDITION



THE PROPERTY COVERED BY THIS PLAT IS SUBJECT TO LIMITATIONS, RESTRICTIONS AND EASEMENTS CONTAINED IN BILL OF ASSURANCE DATED 8/19/58 AND RECORDED IN BOOK 32 PAGE 607 IN THE OFFICE OF THE CIRCUIT COURT CLERK AND EX-OFFICIO RECORDER OF SHARP COUNTY, ARKANSAS AND SAID BILL OF ASSURANCE IS MADE PART HEREOF BY REFERENCE THE SAME AS IF SET OUT IN FULL ON THIS PLAT.

A FRACTIONAL PART OF NE 1/4 NW 1/4 (574) AND OF NW 1/4 NW 1/4 (525) AND OF SE 1/4 NW 1/4 (130) AND OF SW 1/4 NW 1/4 (93) SECTION 21 T-19-N-R-5-W OF THE 5TH PRINCIPAL MERIDIAN SHARP COUNTY, ARKANSAS CONTAINING IN ALL 13.22 ACRES MORE OR LESS

NOTE:

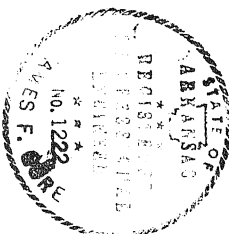
EASEMENT OF 5 FEET IS RETAINED OFF FRONTAGE OF EACH LOT FOR PUBLIC UTILITIES
 2-1/2" SET ON ALL LOT CORNERS

WE HEREBY CERTIFY THAT WE ARE THE OWNERS OF THE PROPERTY SHOWN AND DESCRIBED HEREON, THAT WE ADOPT THE PLAN OF SUBDIVISION AND DEDICATE ALL STREETS TO PUBLIC USE AS SHOWN
 CHEROKEE VILLAGE DEVELOPMENT CO INC.

I HEREBY CERTIFY THAT THE PLAT SHOWN AND DESCRIBED HEREON IS A TRUE AND ACCURATE SURVEY AND THAT MONUMENTS HAVE BEEN PLACED AS SHOWN.

JAMES F. GORE, REGISTERED PROFESSIONAL ENG., ARK. # 1222

SECRETARY



LAKE SHORE P'S ARE AT MEAN GULF ELEVATION 477.0' (1 FOOT ABOVE LAKE SPILLWAY ELEVATION)

PLAT RECORDED 8/19/58 IN BOOK 3 PAGE 45

DRAWN/DATE	9-9-58	RECORD PLAT	REVISIONS
CHECKED/DATE	8/9/58	CHEROKEE VILLAGE SOUTH LAKE ADDITION	
APPROVED/DATE		CHEROKEE VILLAGE ARKANSAS	
		J.F. GORE ASSOCIATES ENGINEERING ARKANSAS	
		HARDY	108-F-46