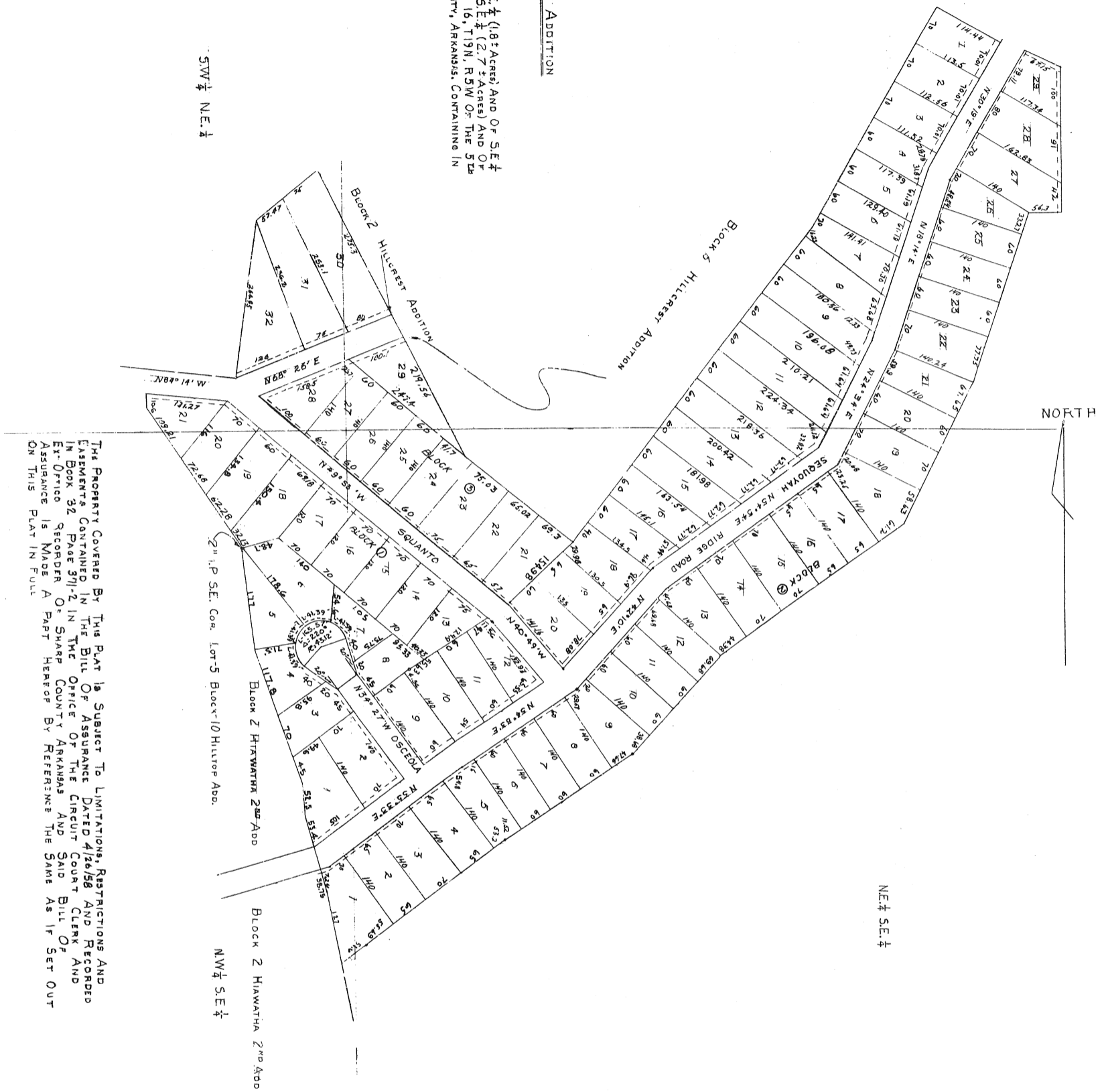


SE 1/4 NE 1/4

CHEROKEE VILLAGE SQUANTO ADDITION
Scale = 100'

A FRACTIONAL PART OF SW 1/4 NE 1/4 (18.5 ACRES) AND OF SE 1/4 NE 1/4 (6.25 ACRES) AND OF NW 1/4 SE 1/4 (2.75 ACRES) AND OF NE 1/4 SE 1/4 (10.6 ACRES) SECTION 16, T19N, R5W OF THE 5th PRINCIPAL MERIDIAN, SHARP COUNTY, ARKANSAS, CONTAINING IN ALL 21.5 ACRES MORE OR LESS

SW 1/4 NE 1/4



THE PROPERTY COVERED BY THIS PLAT IS SUBJECT TO LIMITATIONS, RESTRICTIONS AND EASEMENTS CONTAINED IN THE BILL OF ASSURANCE DATED 4/26/58 AND RECORDED IN BOOK 32 PAGE 371-2 IN THE OFFICE OF THE CIRCUIT COURT CLERK AND EX-OFFICIO RECORDS OFFICER OF SHARP COUNTY ARKANSAS AND SAID BILL OF ASSURANCE IS MADE A PART HEREOF BY REFERENCE THE SAME AS IF SET OUT ON THIS PLAT IN FULL

NOTE:
1- EASEMENT OF 5' IS RETAINED OFF FRONTAGE OF EACH LOT FOR PUBLIC UTILITIES.
2- ---- INDICATES I.P. SET

I HEREBY CERTIFY THAT THE PLAT SHOWN AND DESCRIBED HEREON IS A TRUE AND ACCURATE SURVEY AND THAT THE MONUMENTS HAVE BEEN PLACED AS SHOWN.

JAMES F. GORE REGISTERED
PROFESSIONAL ENR. 1222 Ark.

SECRETARY

WE HEREBY CERTIFY THAT WE ARE THE OWNER OF THE PROPERTY SHOWN AND DESCRIBED HEREON, THAT WE ADOPT THE PLAN OF SUBDIVISION AND DEDICATE ALL STREETS TO PUBLIC USE AS NOTED.
CHEROKEE VILLAGE DEVELOPMENT CO., INC.

Drawn By	JFH	REVISOR
Date	4-29-58	
Created By		
Date		
Approved		
Book No		
Job No.	108	Drawing No. 108-F-36
RECORD PLAT		
SQUANTO ADDITION		
CHEROKEE VILLAGE		
HARDY, ARKANSAS		
J.F. GORE & ASSOCIATES		
ENGINEERS		
HARDY, ARKANSAS		